

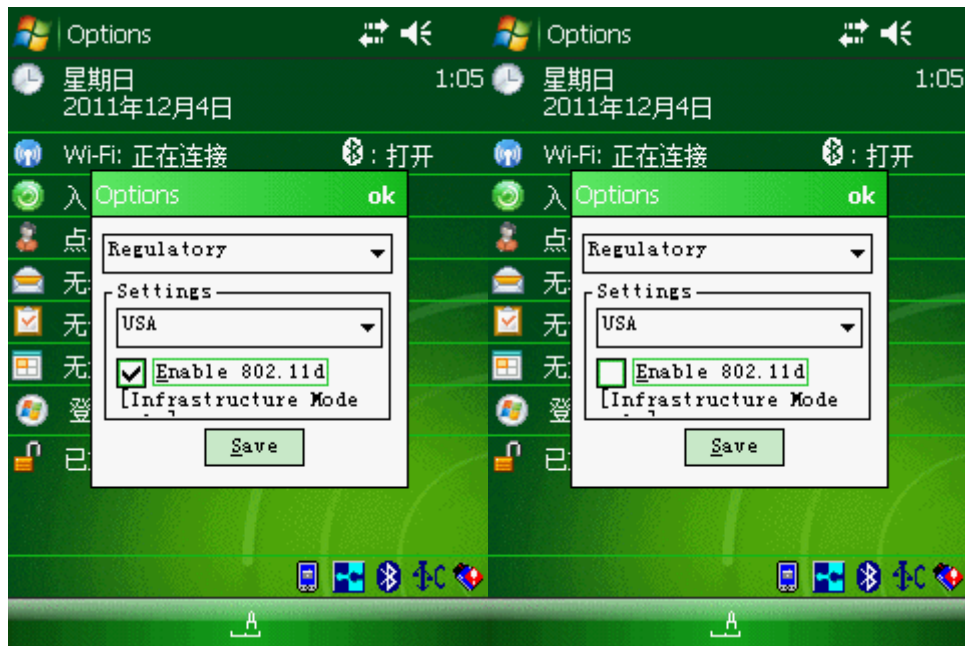
无线网络配置顺序：



## 一、先取消 **USA Enable 802.11d** 的支持

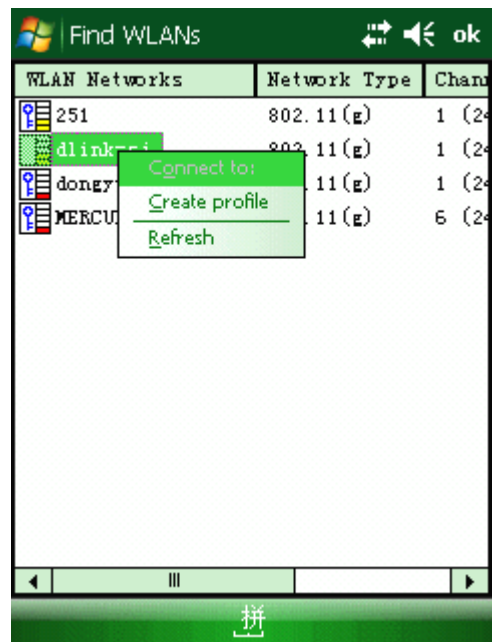
具体步骤： Options -> Regulatory -> Setting -> USA 将 Enable 802.11d 前的勾去掉。  
如下图：





## 二、查找网络并配置

具体步骤：Find WLANs -> 选中你要配置的网络名称，并长按 在出来的菜单中选中 Create Profile。默认下一步，直到 第三步（3 of 8）选择你要得加密方式。  
如下图：



Find WLANs

Wireless LAN Profile Entry

Profile: 251

ESSID: 251

1 of 8 Cancel < Back Next >

Find WLANs

Wireless LAN Profile Entry

Operating Mode: Infrastructure

Country: Allow Any Country

2 of 8 Cancel < Back Next >

Find WLANs

Wireless LAN Profile Entry

Security Mode: Legacy (Pre-WPA)

Legacy (Pre-WPA)  
WPA - Personal  
WPA - Enterprise  
WPA2 - Personal  
WPA2 - Enterprise  
None

3 of 8 Cancel < Back Next >

Find WLANs

Wireless LAN Profile Entry

Security Mode: WPA - Enterprise

Authentication Type: EAP-TLS

3 of 12 Cancel < Back Next >

在配置中 4 of 8 为默认项目，修改后的如右图所示：

